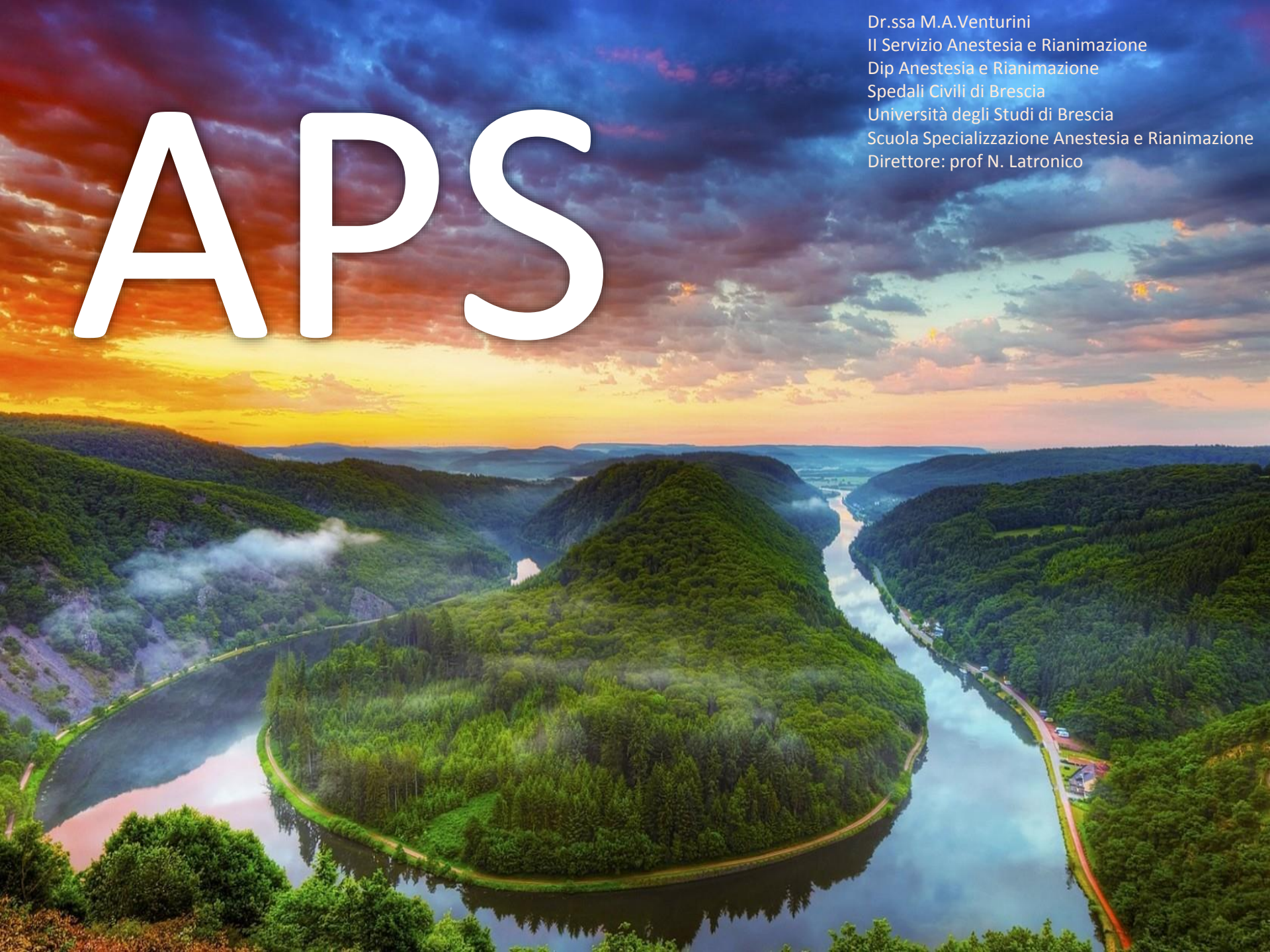


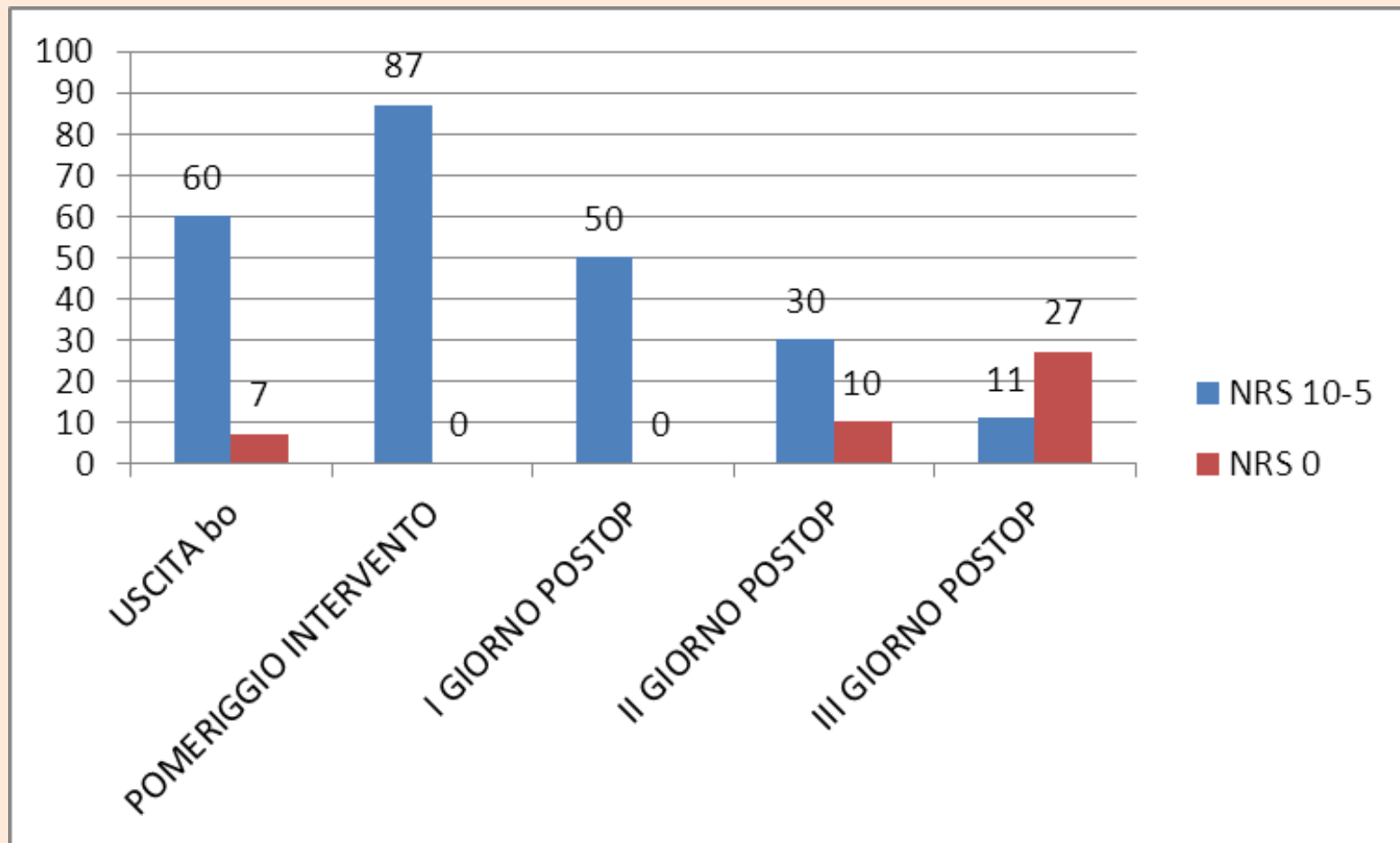
APS

Dr.ssa M.A.Venturini
Il Servizio Anestesia e Rianimazione
Dip Anestesia e Rianimazione
Spedali Civili di Brescia
Università degli Studi di Brescia
Scuola Specializzazione Anestesia e Rianimazione
Direttore: prof N. Latronico



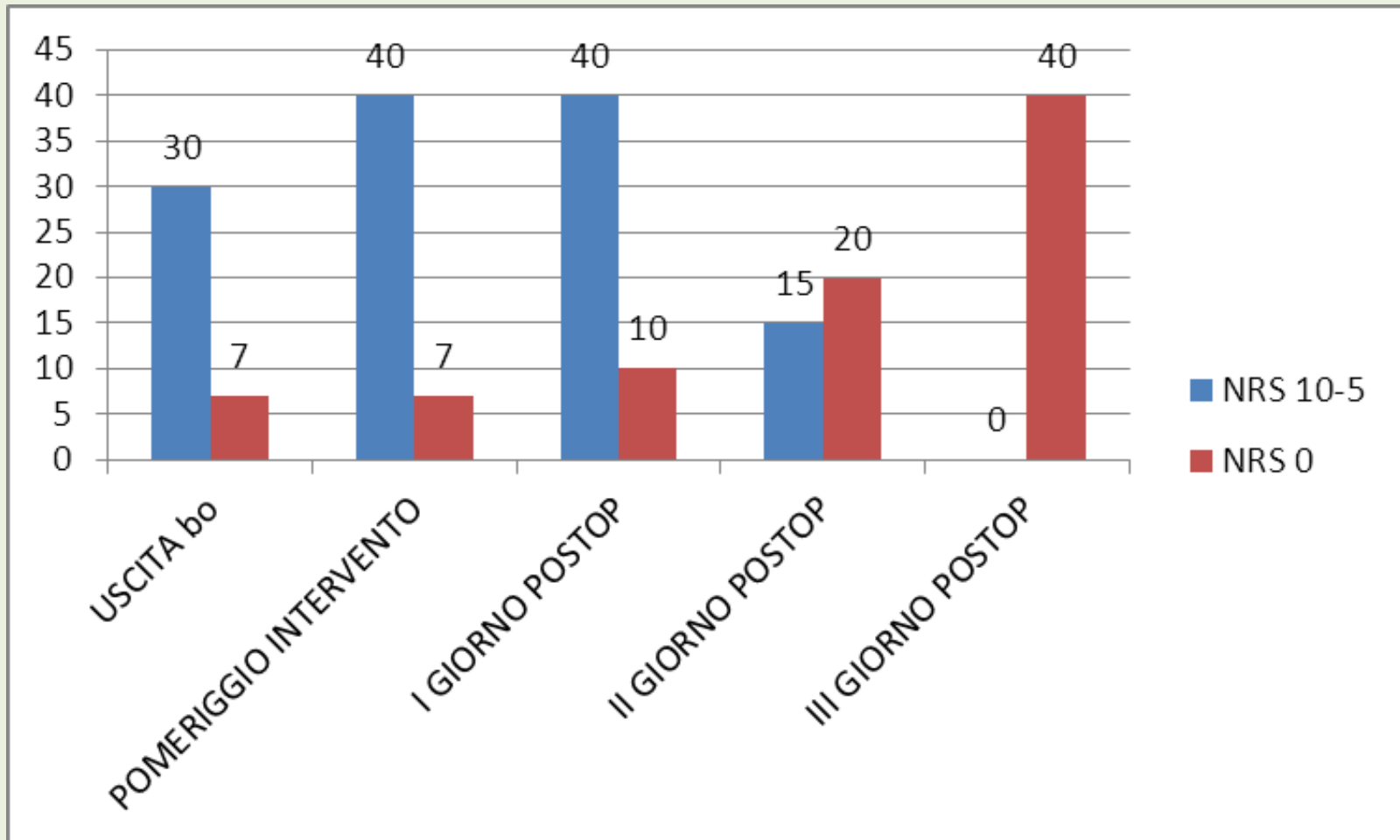
2008

INTERVENTI IN CUI È PREVISTO DOLORE SEVERO



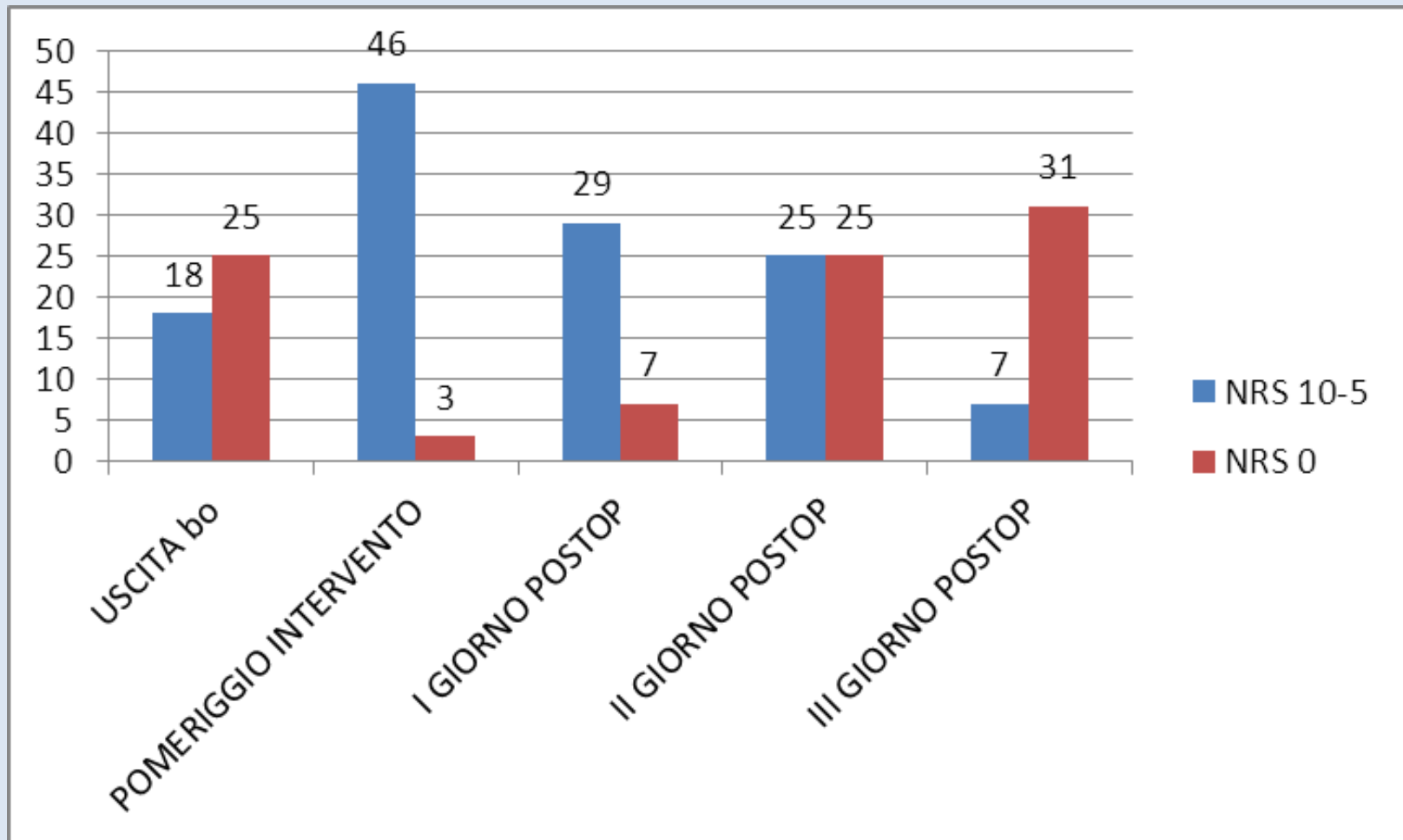
2008

INTERVENTI IN CUI È PREVISTO DOLORE MODERATO



2008

INTERVENTI IN CUI È PREVISTO DOLORE LIEVE



Acute Pain Service

2013

1298 pazienti:

406 neurochirurgia

402 1° chirurgia

424 3° chirurgia

66 Altro (orl, pl, etc)

Compresi pazienti TIPO

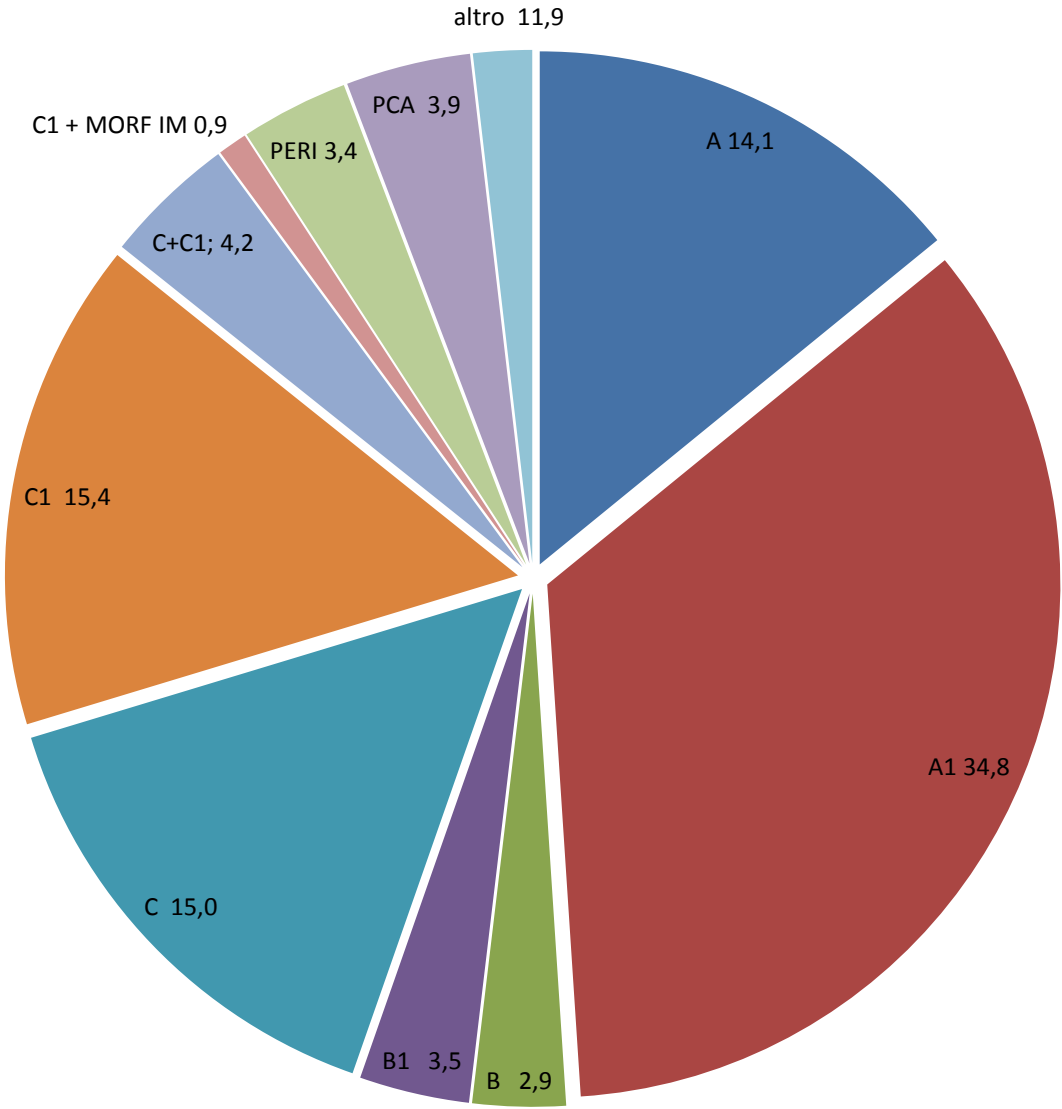
2012

1091 pazienti:

Mancano fogli APS
pazienti TIPO

587 pazienti / 435 fogli APS = **74%**

2013: TOTALE PAZIENTI 1297

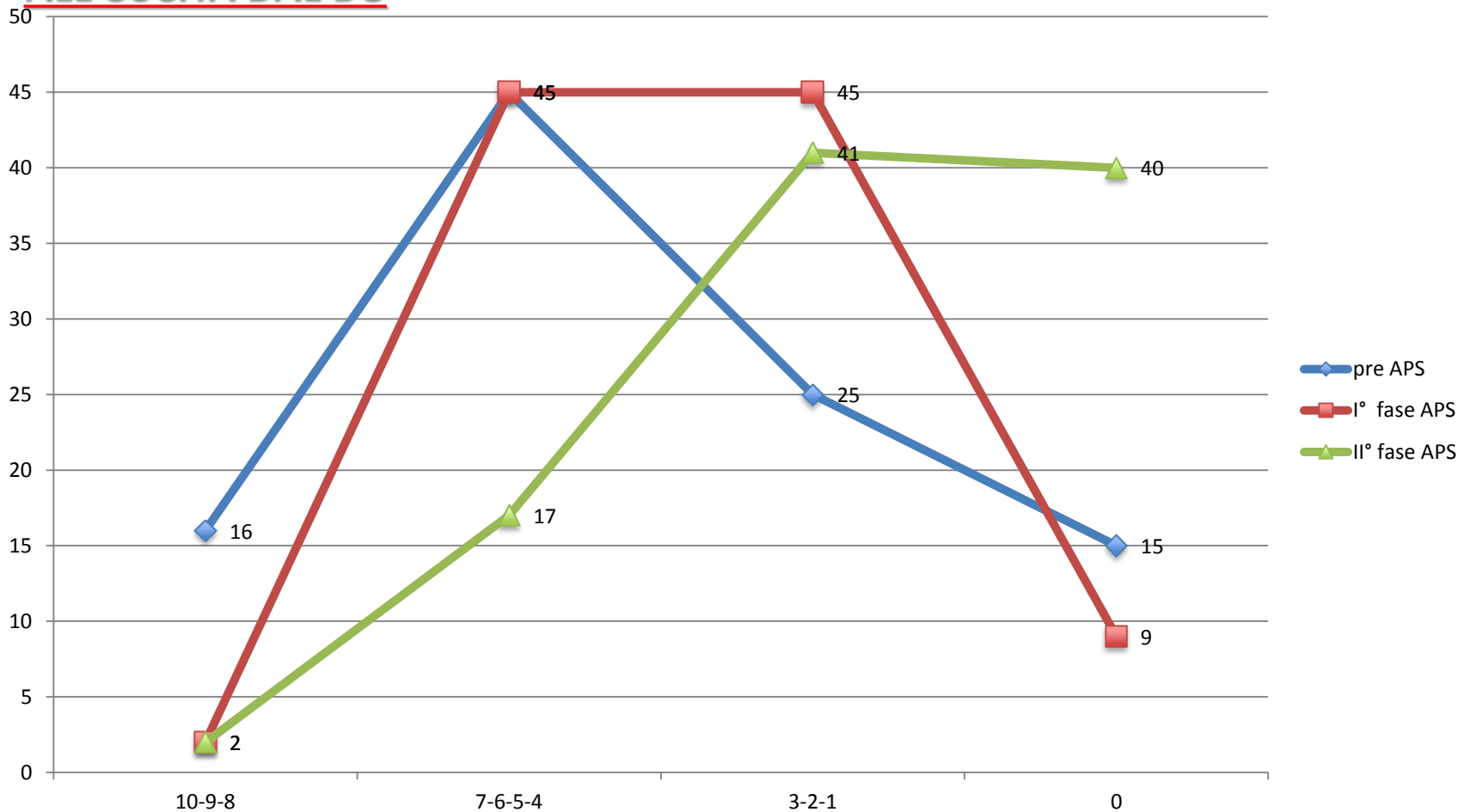


	2012	2013
A	14	14,1
A1	16	34,8
Morfina 24 ore	5	
Peridurale	1	3,4
PCA	2	3.9
B	6	2,9
B1	4	3,5
C	12	15
C1	22	15,4
C + C1	6	4,2
Altro	12	2,8

Interventi chirurgia maggiore in cui è previsto dolore SEVERO

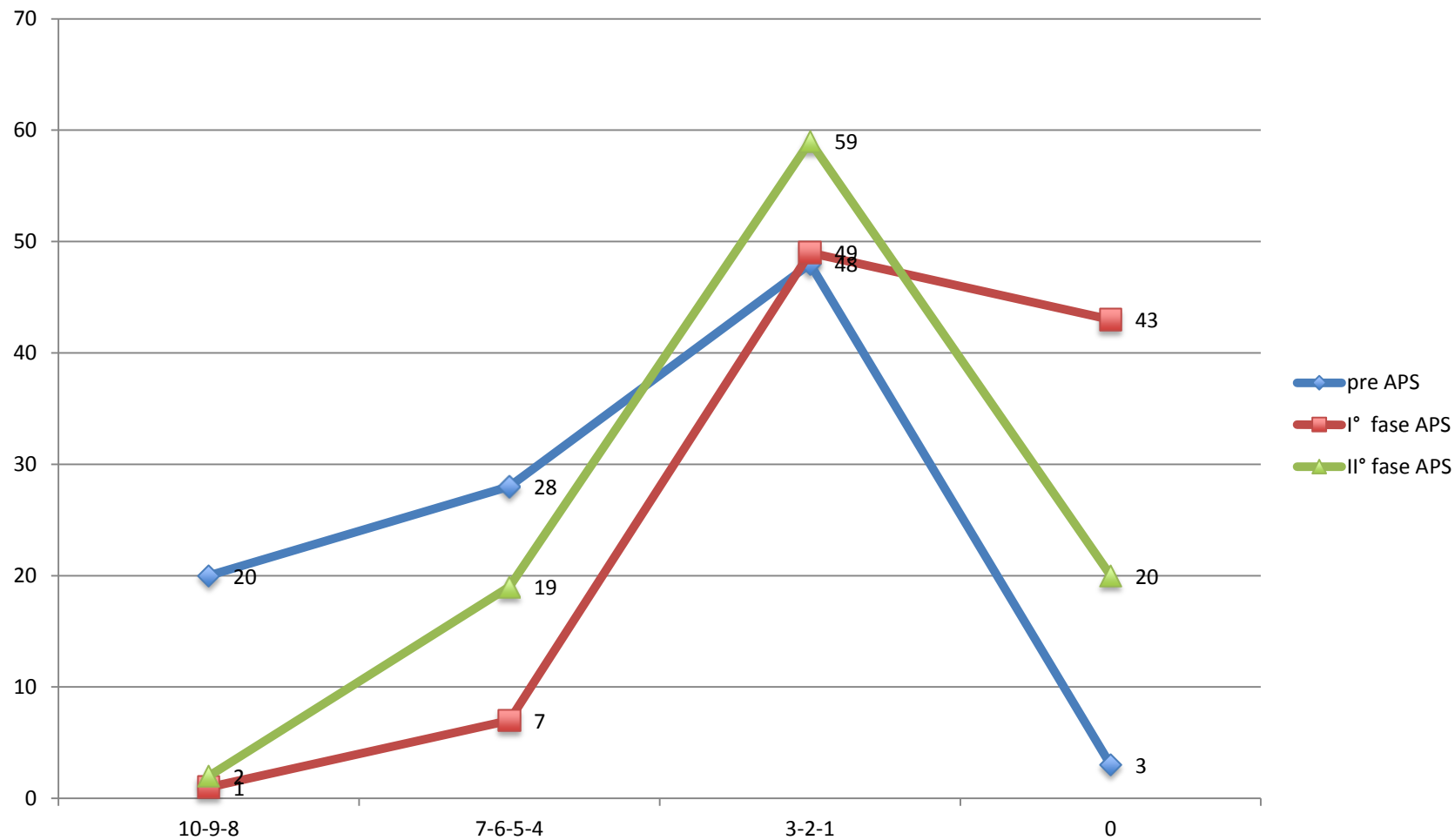
52% DEI PAZIENTI TOTALI
697/1697

ALL'USCITA DAL BO



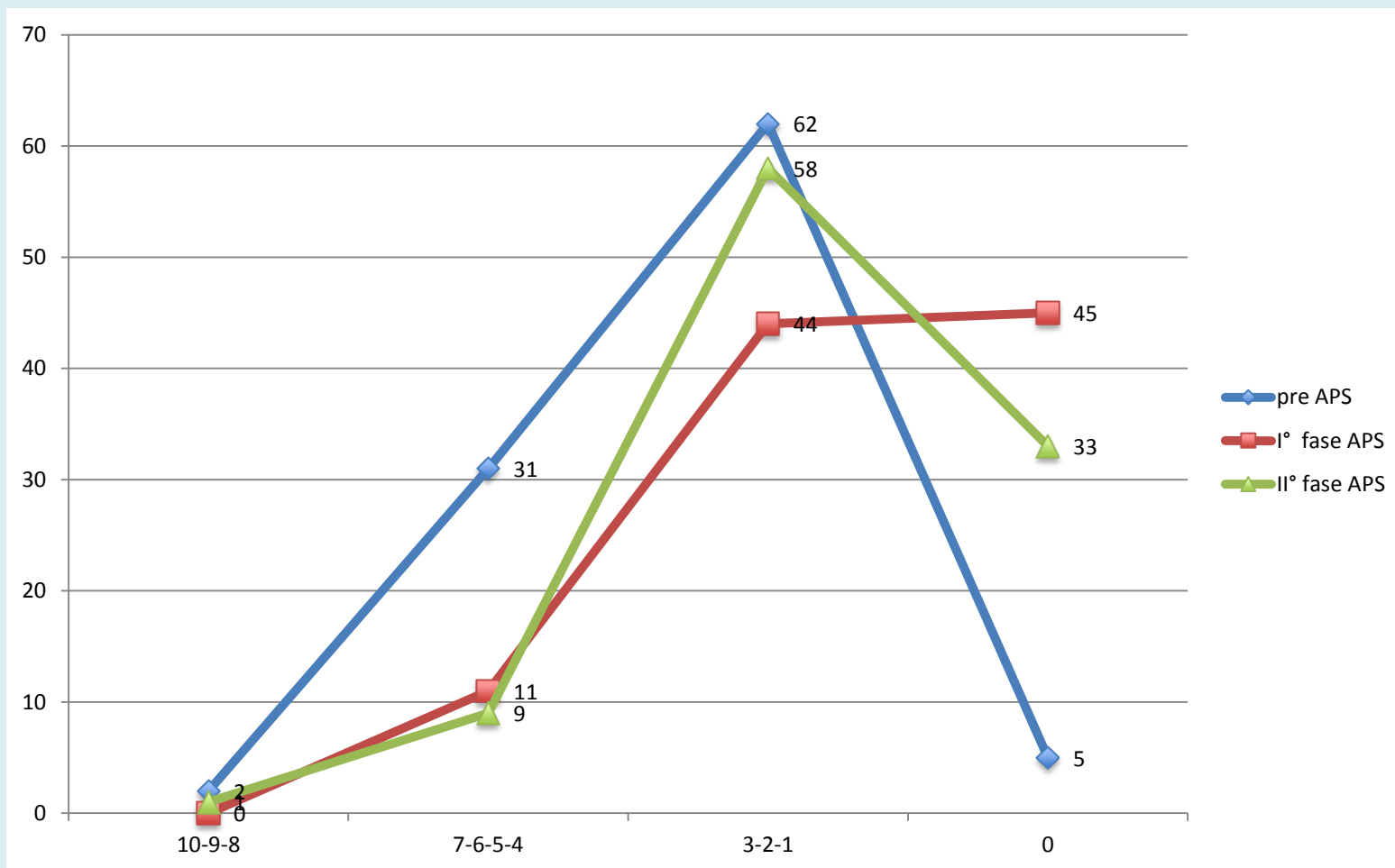
Interventi chirurgia maggiore in cui è previsto dolore SEVERO

POMERIGGIO GIORNO 1



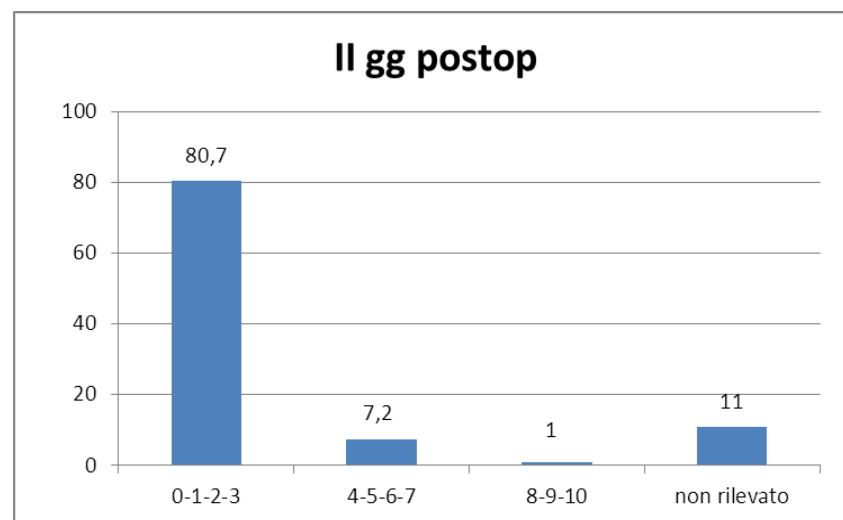
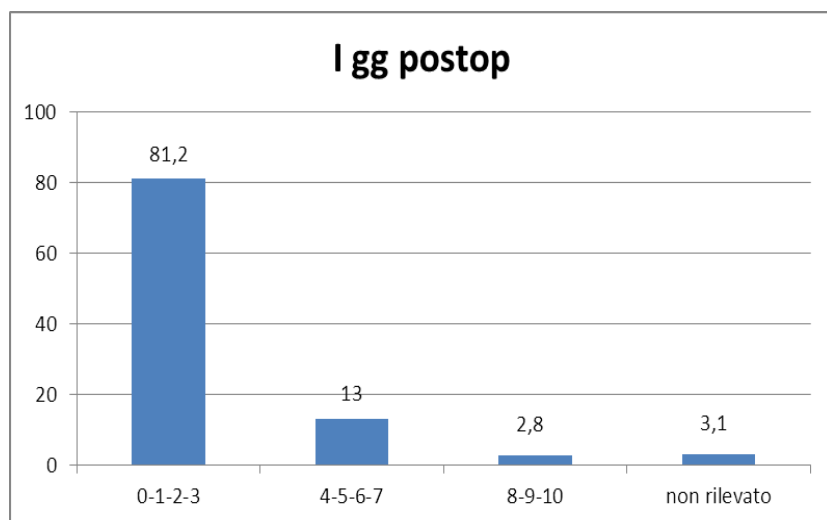
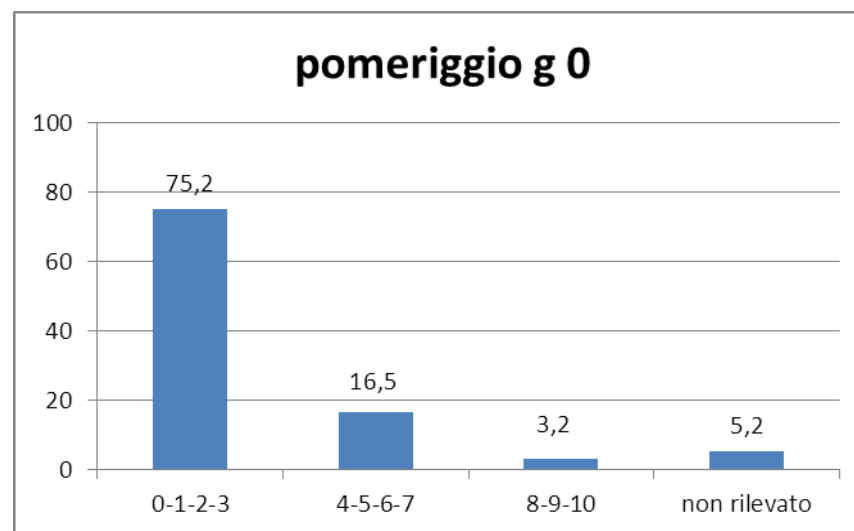
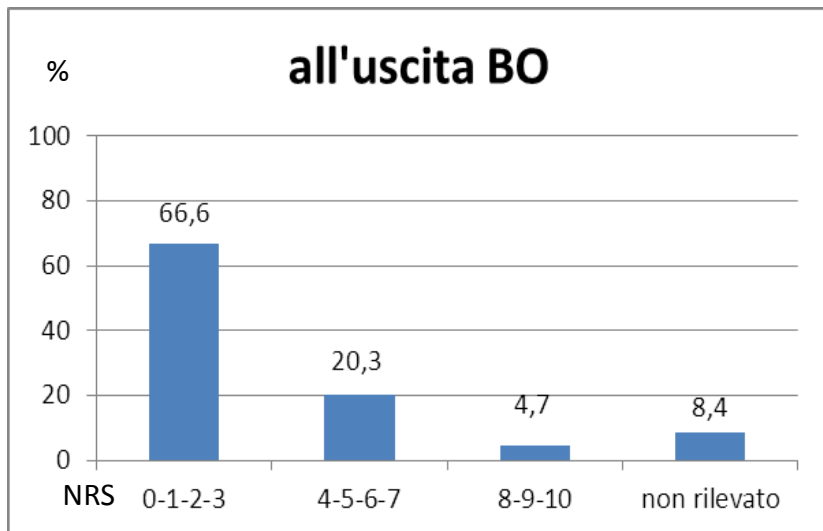
Interventi chirurgia maggiore in cui è previsto dolore SEVERO

POMERIGGIO GIORNO 2



Interventi in cui è previsto dolore severo

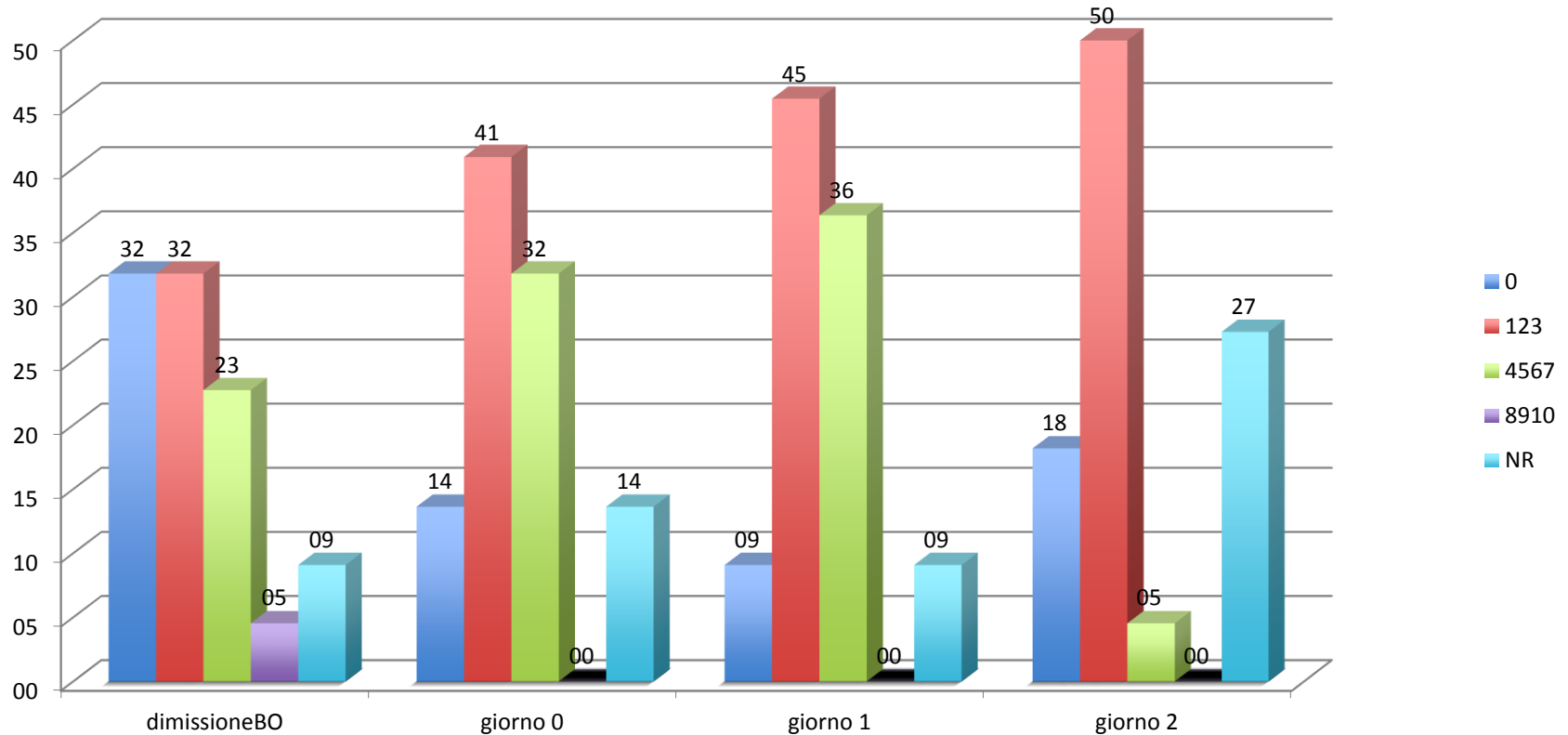
(679 su 1297 = 52%)




Urgent!

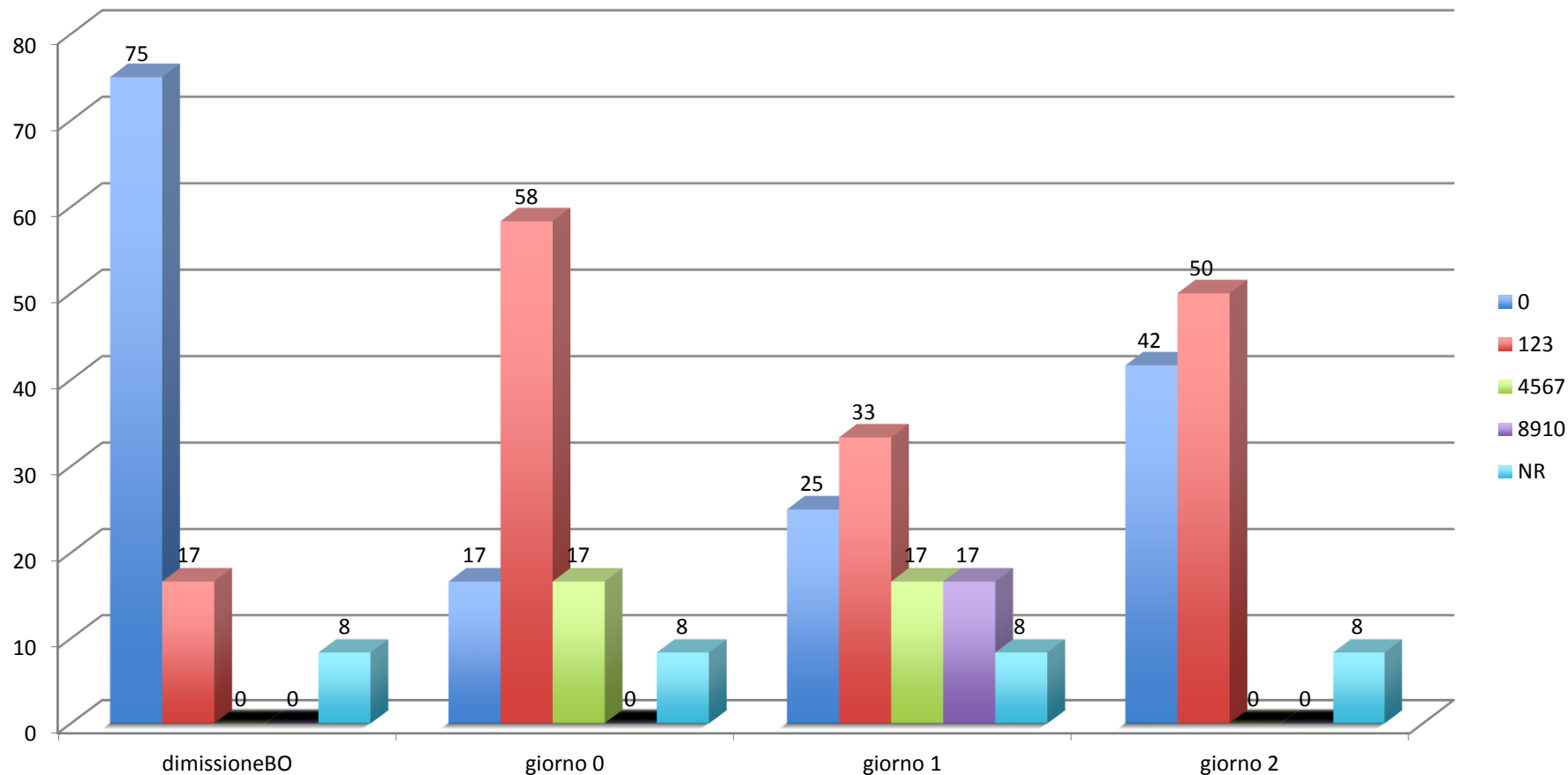


PCA 3,9 % paz



1. Numerosità implementabile  Opuscolo informativo
2. NRS > 3 alla dimissione BO : NON CORRETTO iniziare PCA
3. Alta % di paz non visti
4. Incompleta raccolta dei dati: manca n° boli richiesti ed erogati nel 90% delle visite

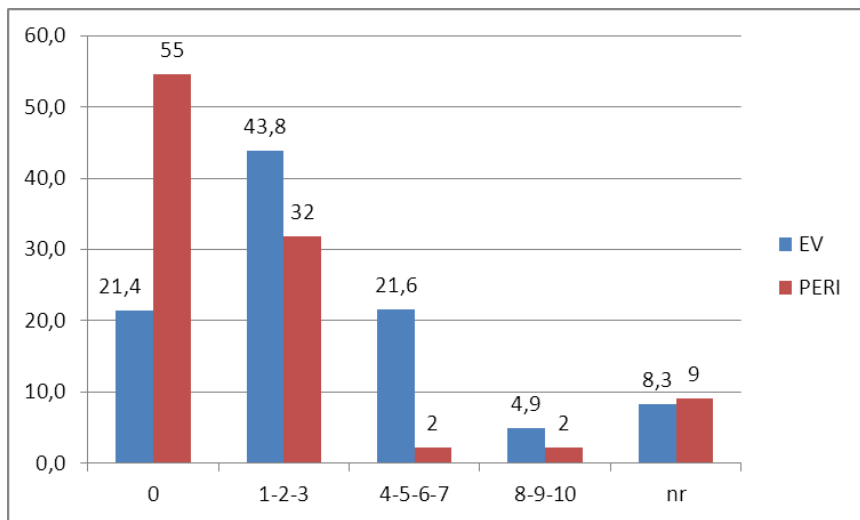
PERIDURALE 3,4% paz



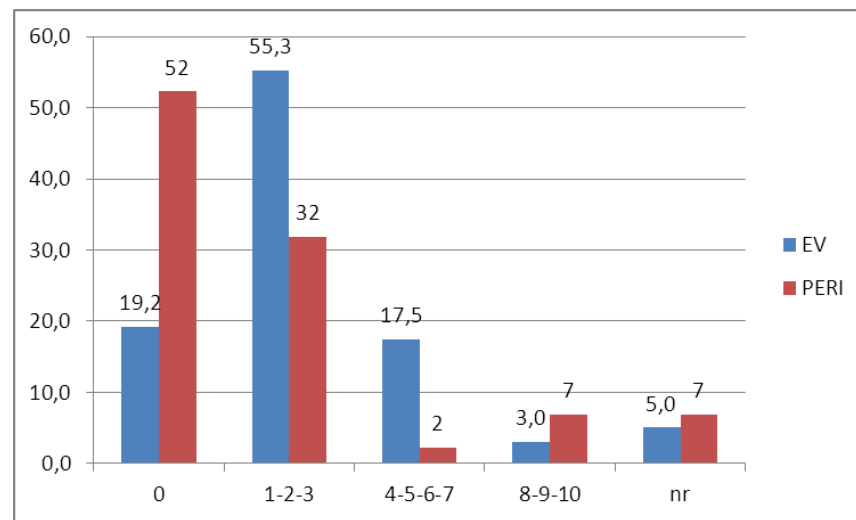
1. Più alto numero pazienti NRS = 0 : tecnica migliore
2. Più alto numero pazienti NRS >4 e > 8 in 1°g : problema del “cambio sacca”

Confronto analgesia EV(635 paz= 49%) / Peridurale(44 paz = 3,4%)

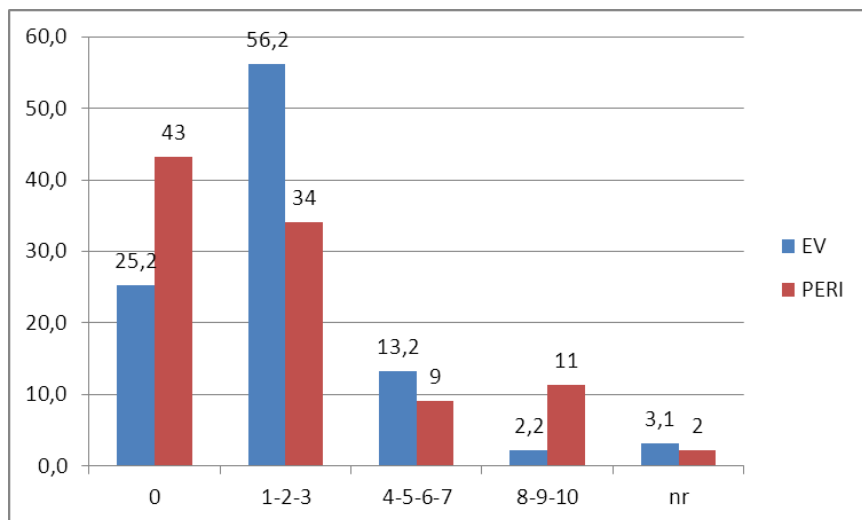
All'uscita BO



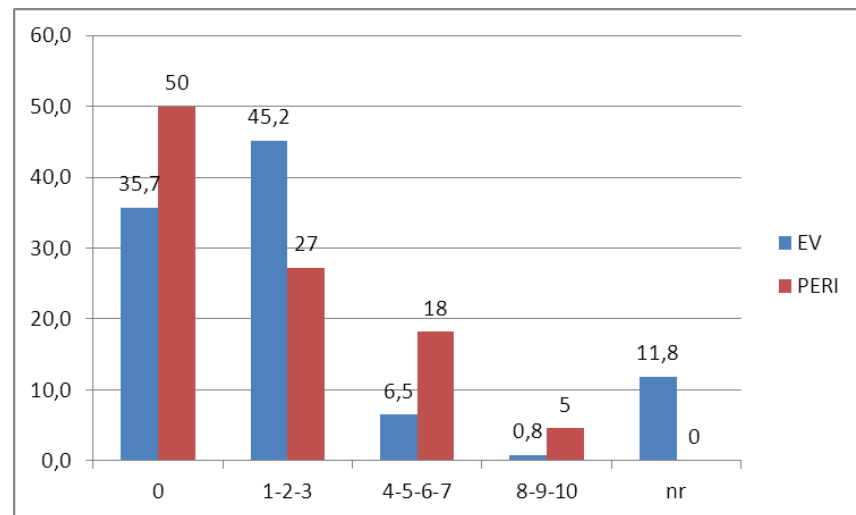
Pomeriggio intervento



Pomeriggio I gg



Pomeriggio II gg

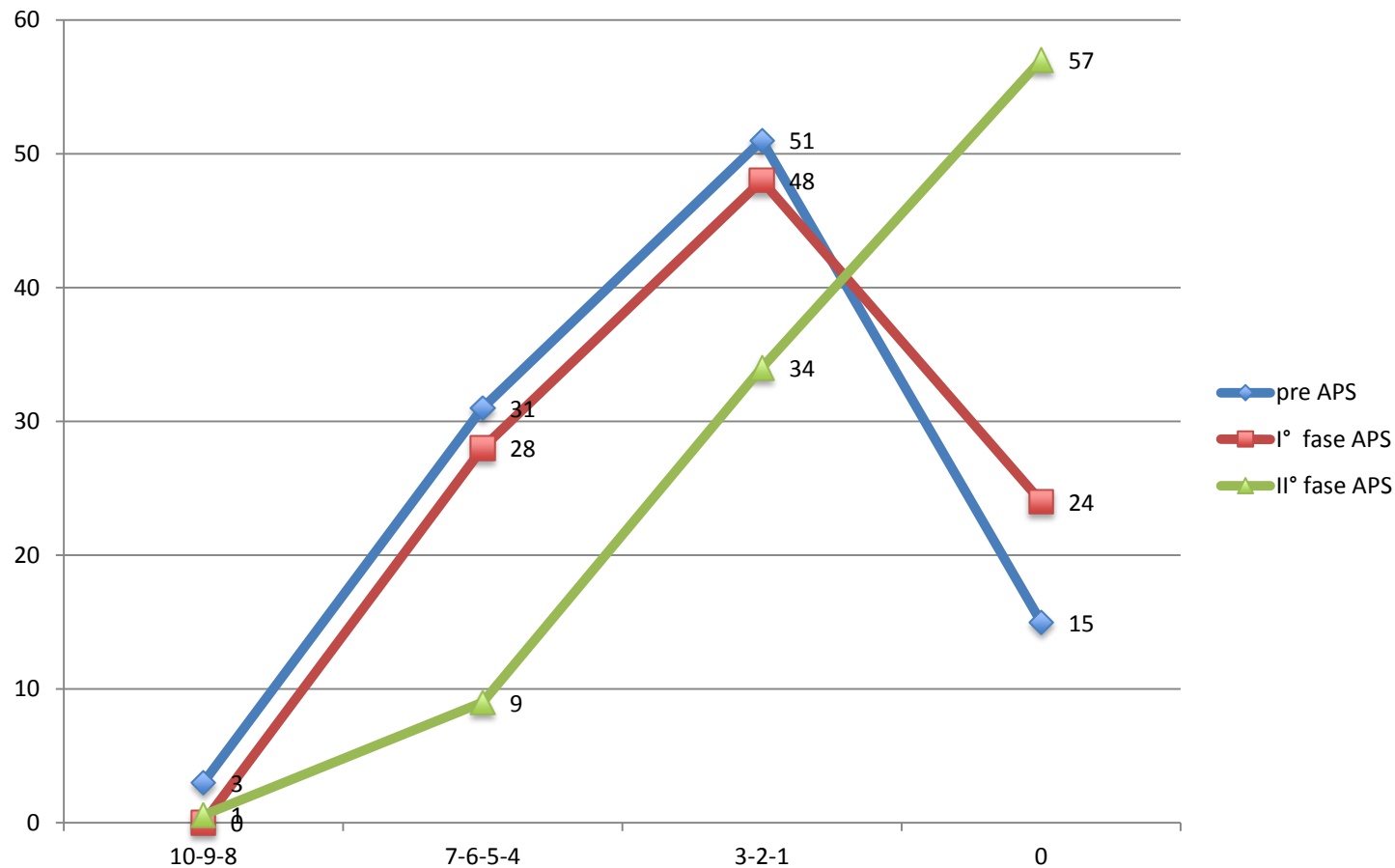




Interventi chirurgia media invasività in cui è previsto dolore MODERATO

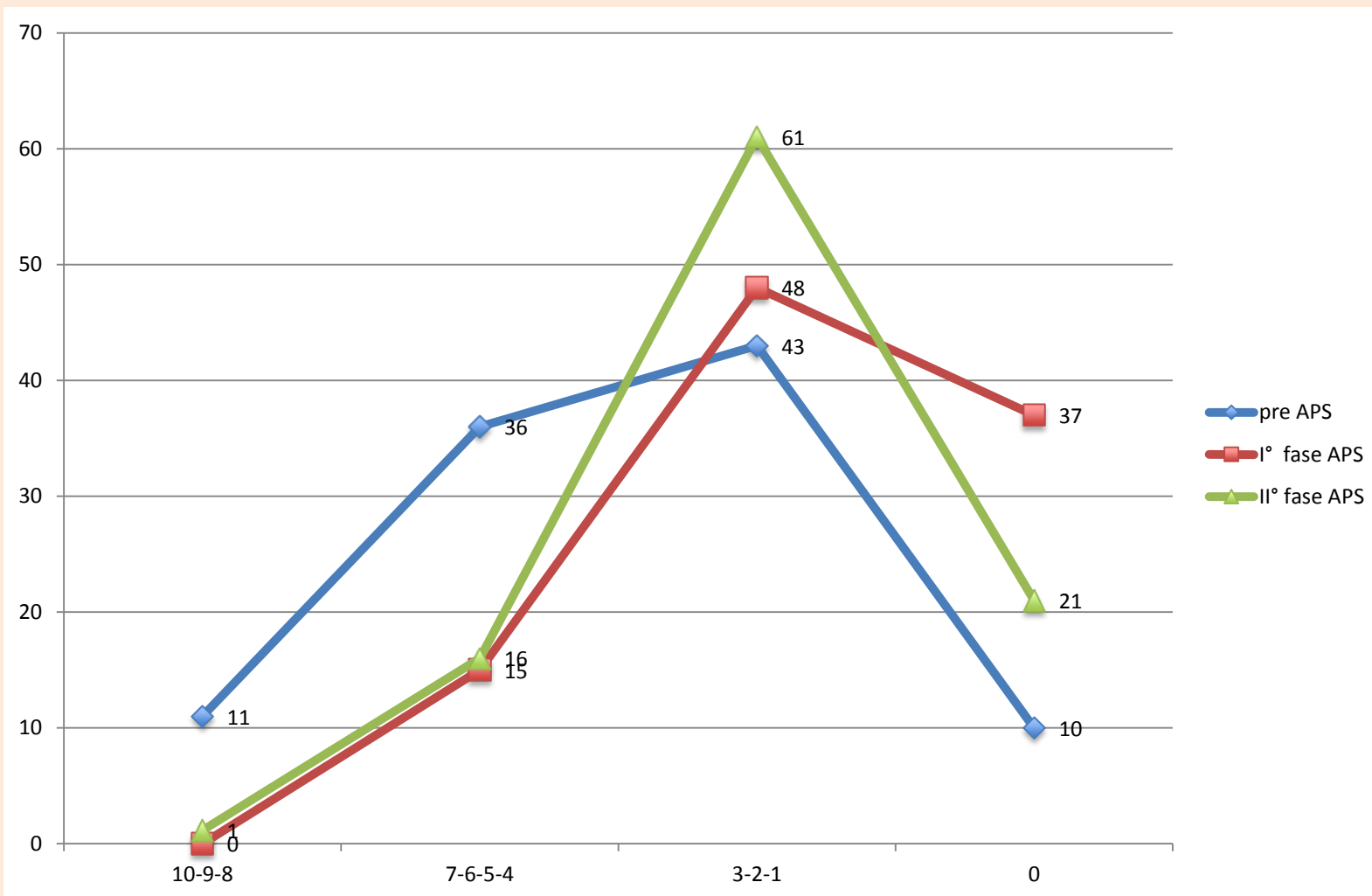
(83 su 1297 = 6,4 %)

Dolore all'uscita del BO



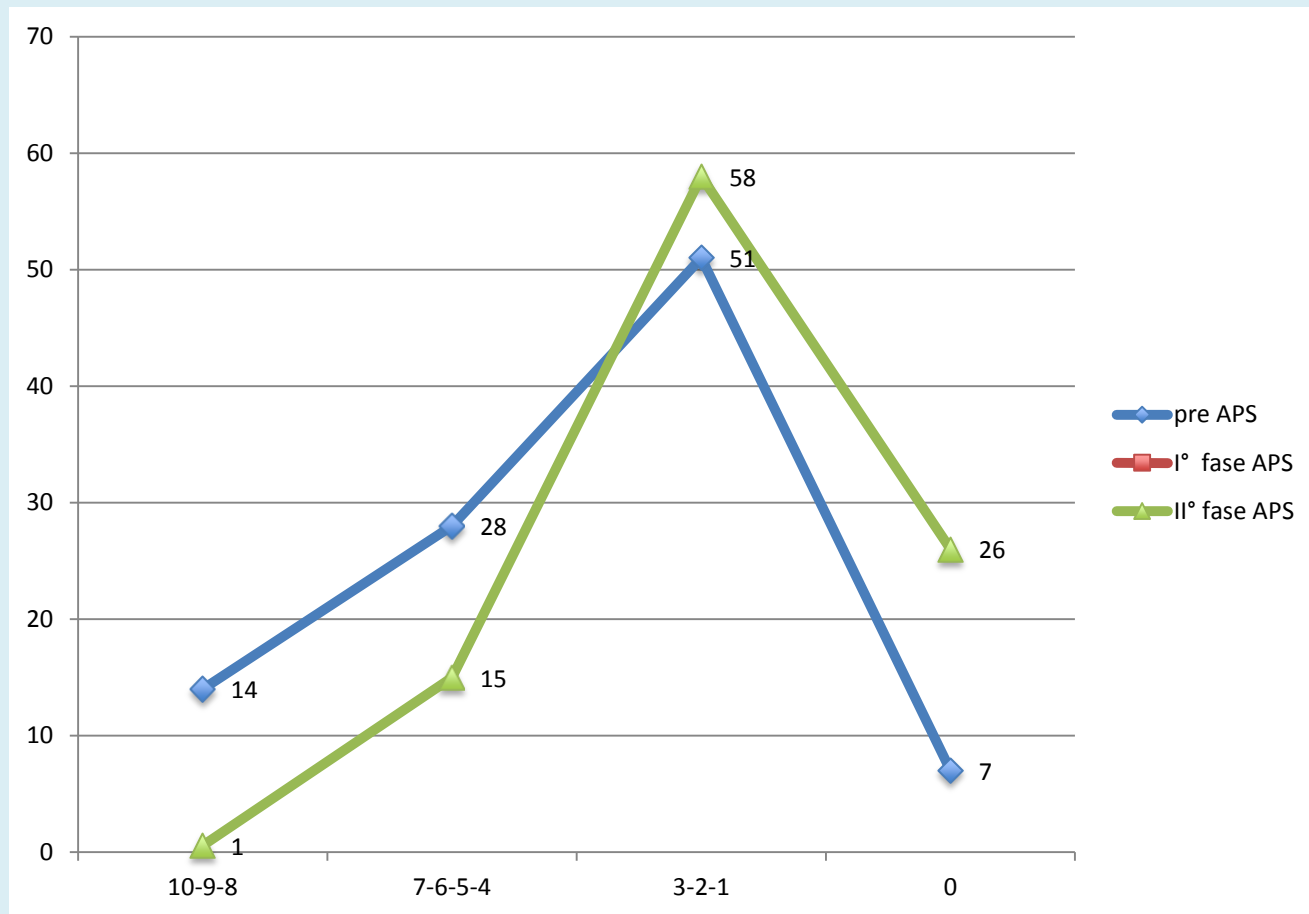
dolore MODERATO

Dolore il pomeriggio del giorno 0

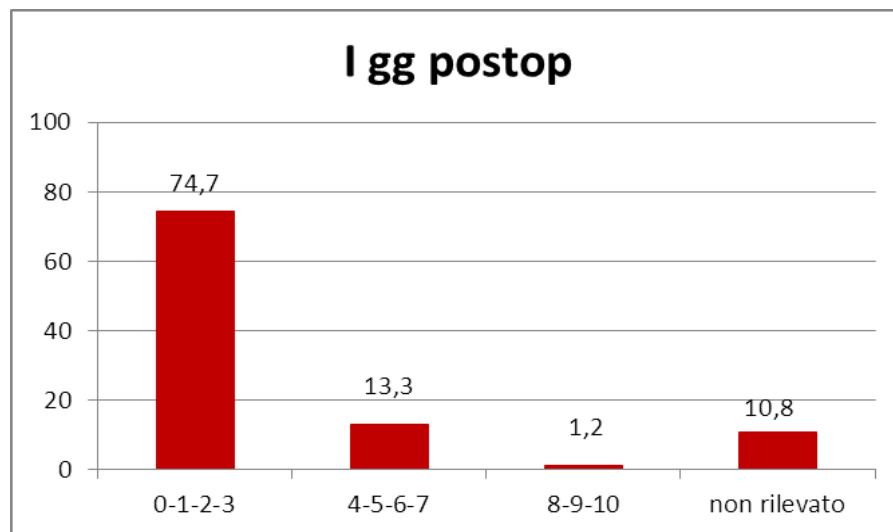
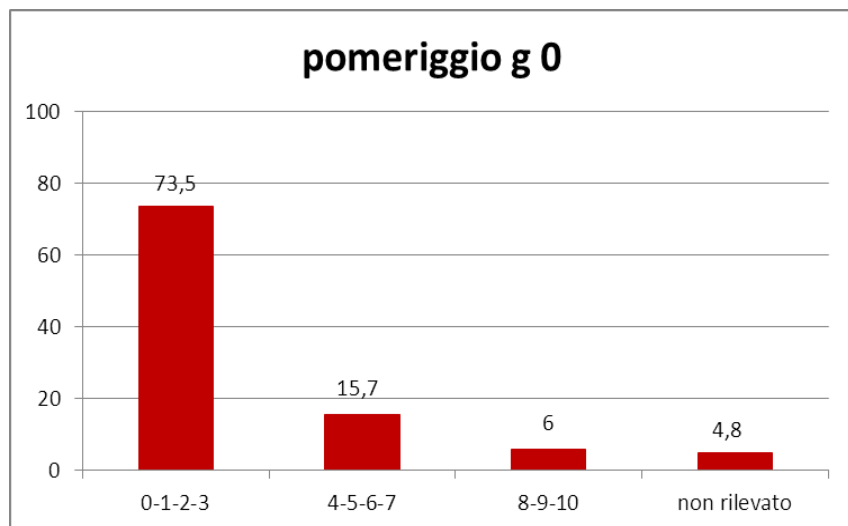
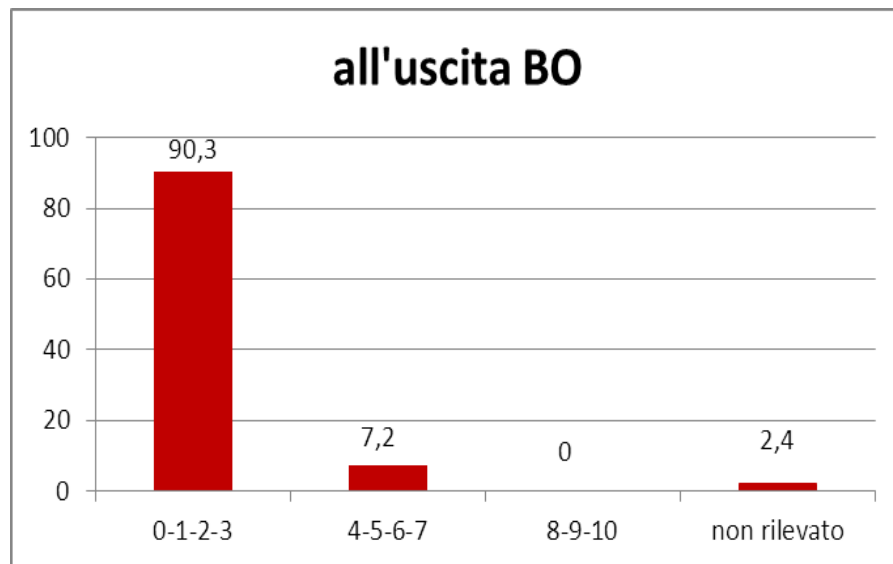


dolore MODERATO

Dolore giorno 1°



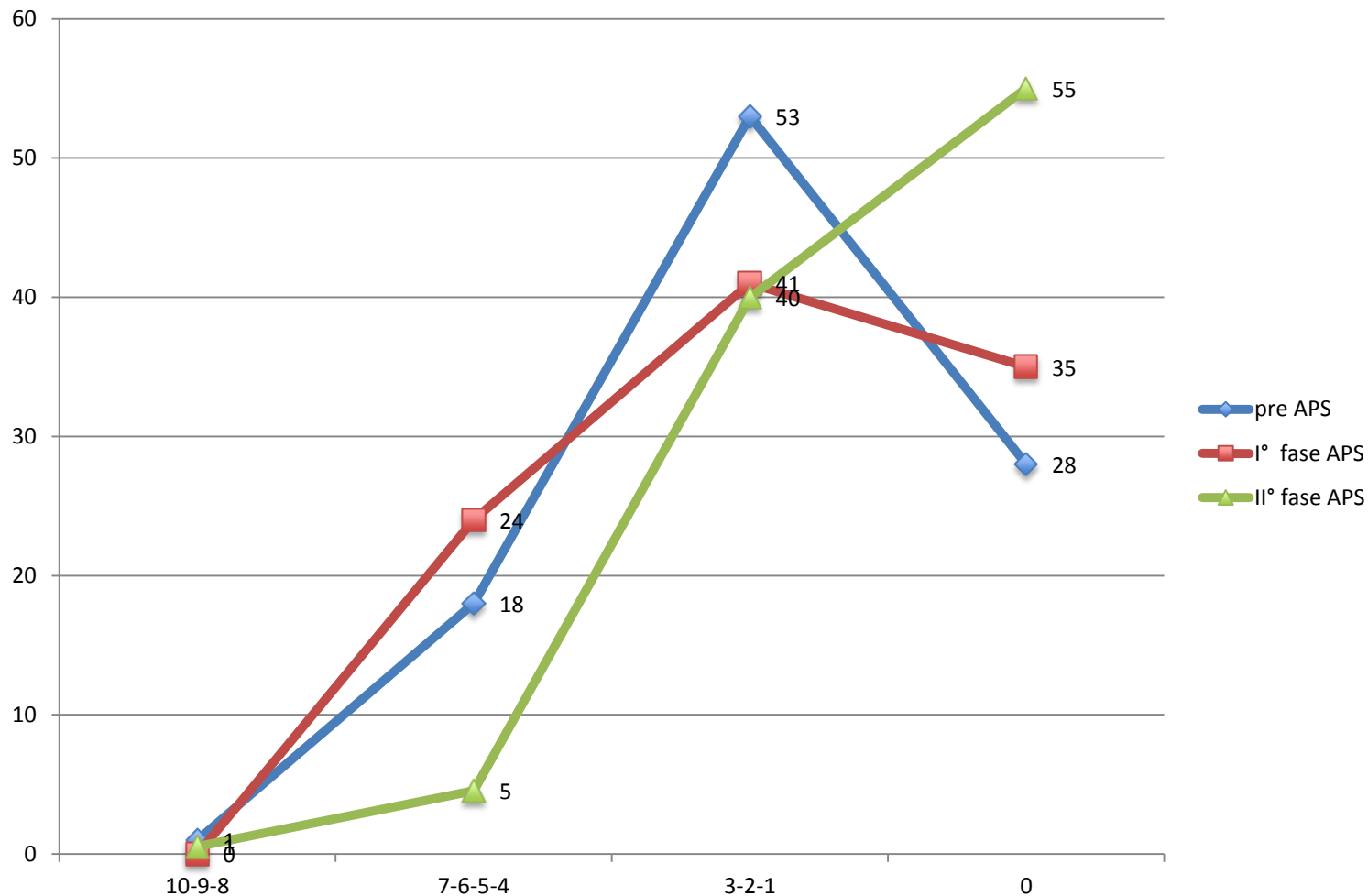
Interventi in cui è previsto dolore **MODERATO**





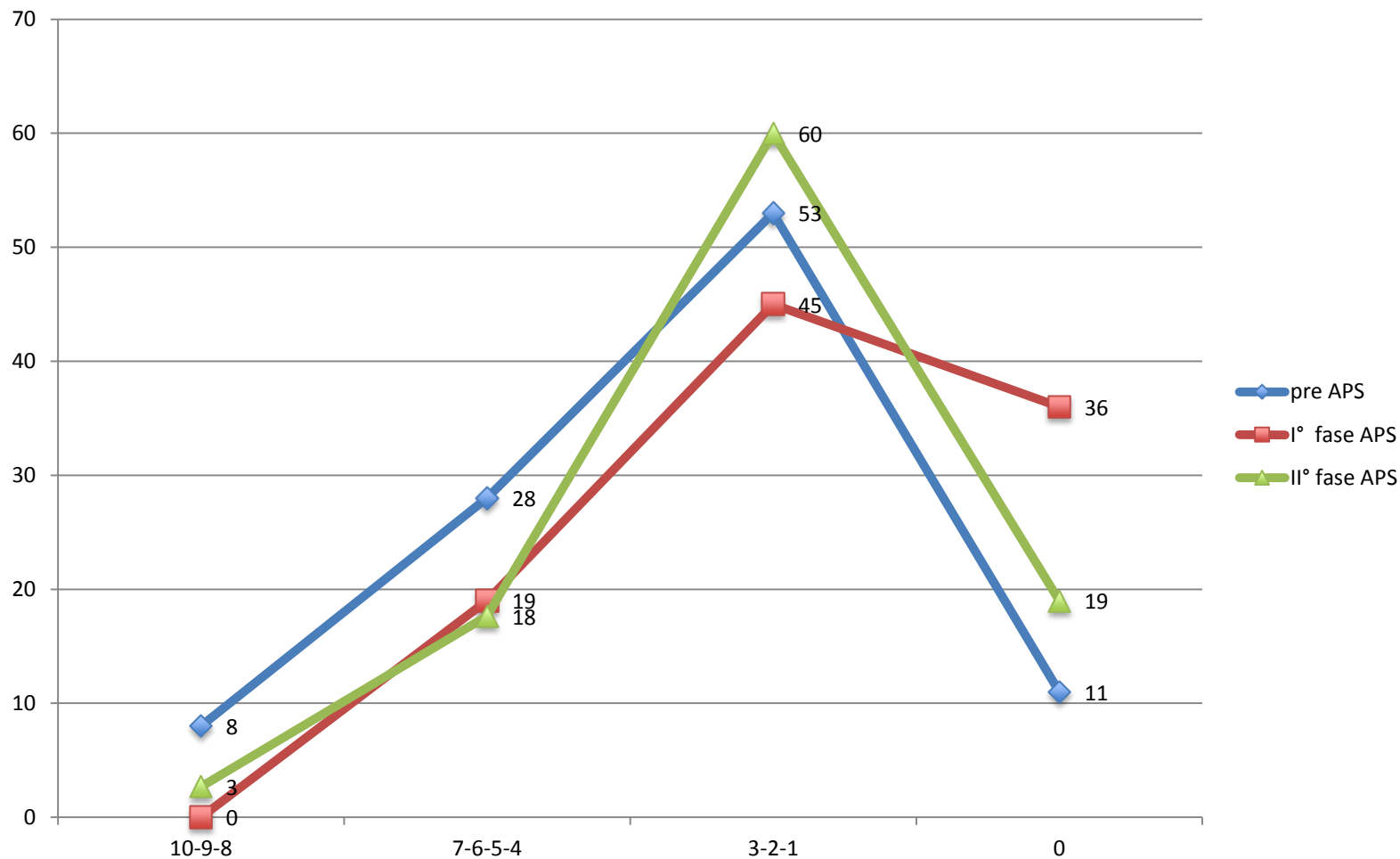
Interventi chirurgia minima invasività in cui è previsto dolore LIEVE

Dolore all'uscita del BO



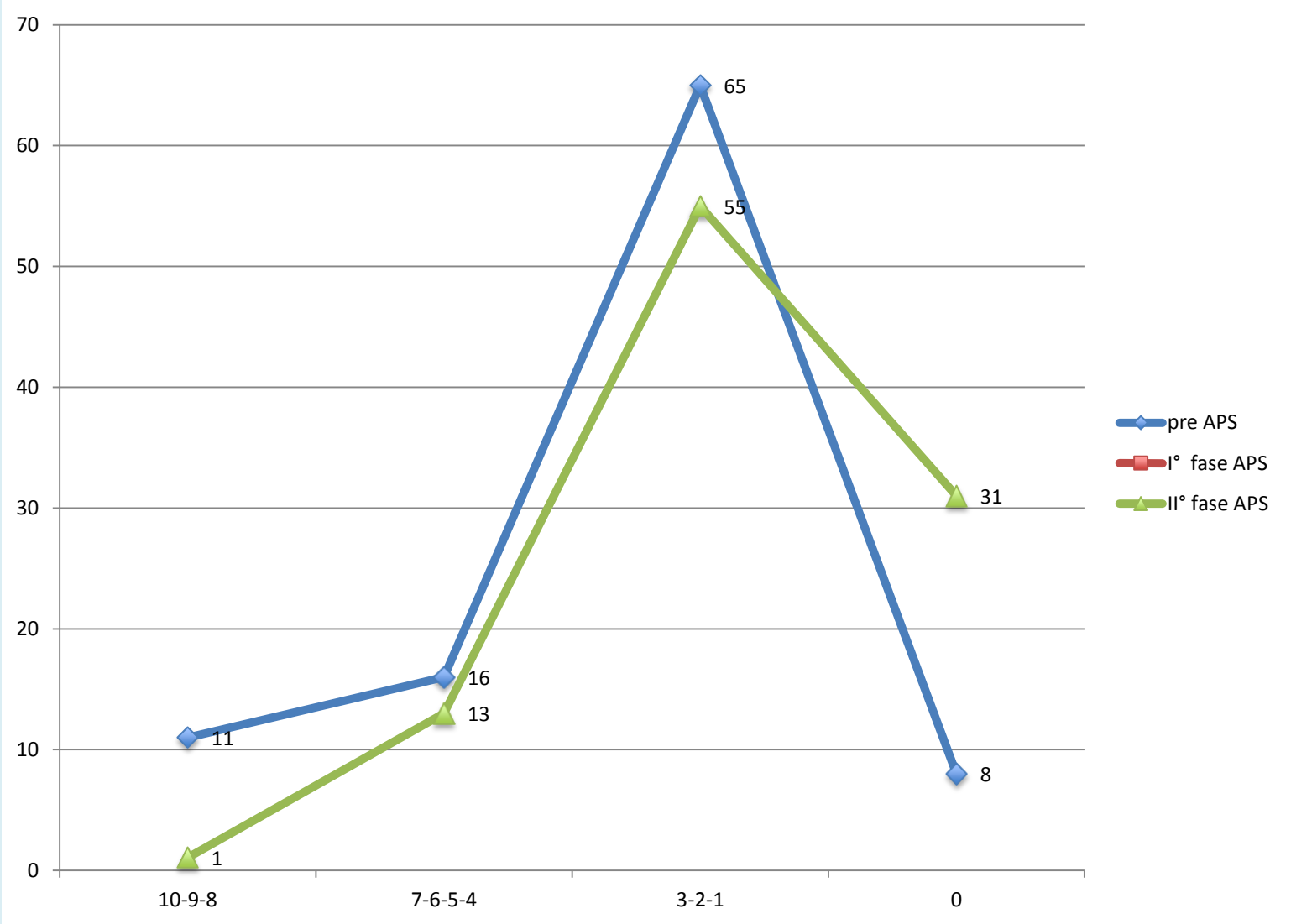
Dolore LIEVE

Dolore il pomeriggio del giorno 0



Dolore LIEVE

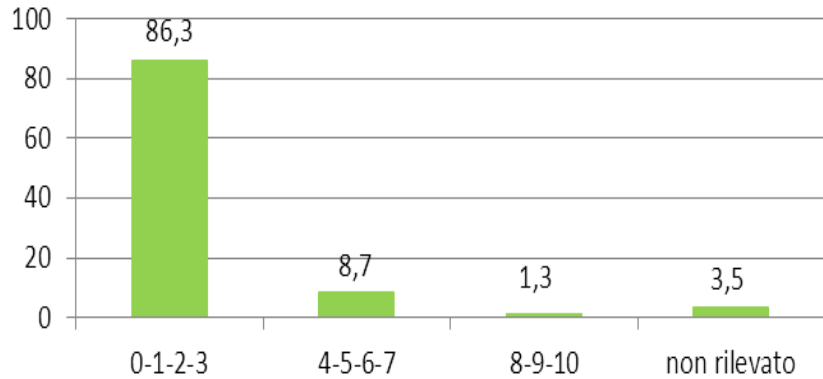
Dolore il pomeriggio del giorno 1°



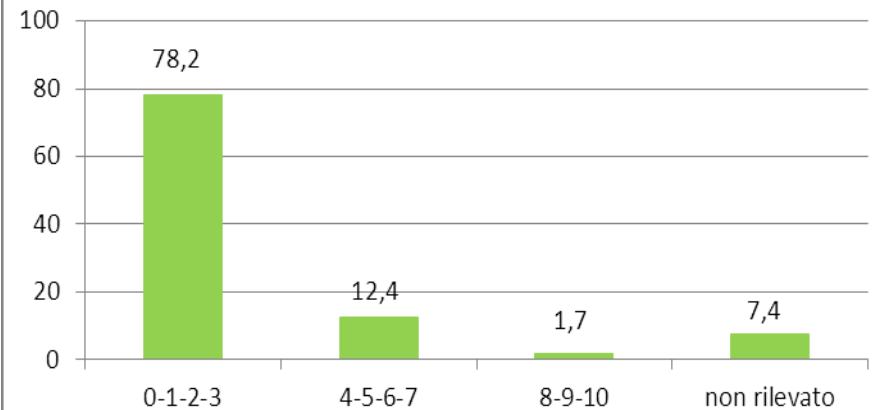
Interventi in cui è previsto dolore **LIEVE**

(460 su 1297 = 35,5 %)

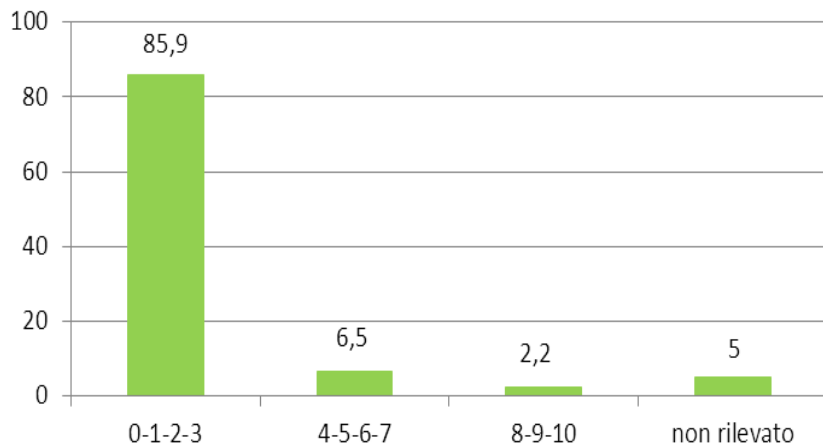
all'uscita BO



pomeriggio g 0



1 gg postop



... concludendo

A photograph of a car driving on a winding road at night. The road is illuminated by the car's headlights, creating a bright path that curves through the dark landscape. The car is visible in the distance, and the overall scene is bathed in a warm, orange glow.

criticità

Non-visit patients

